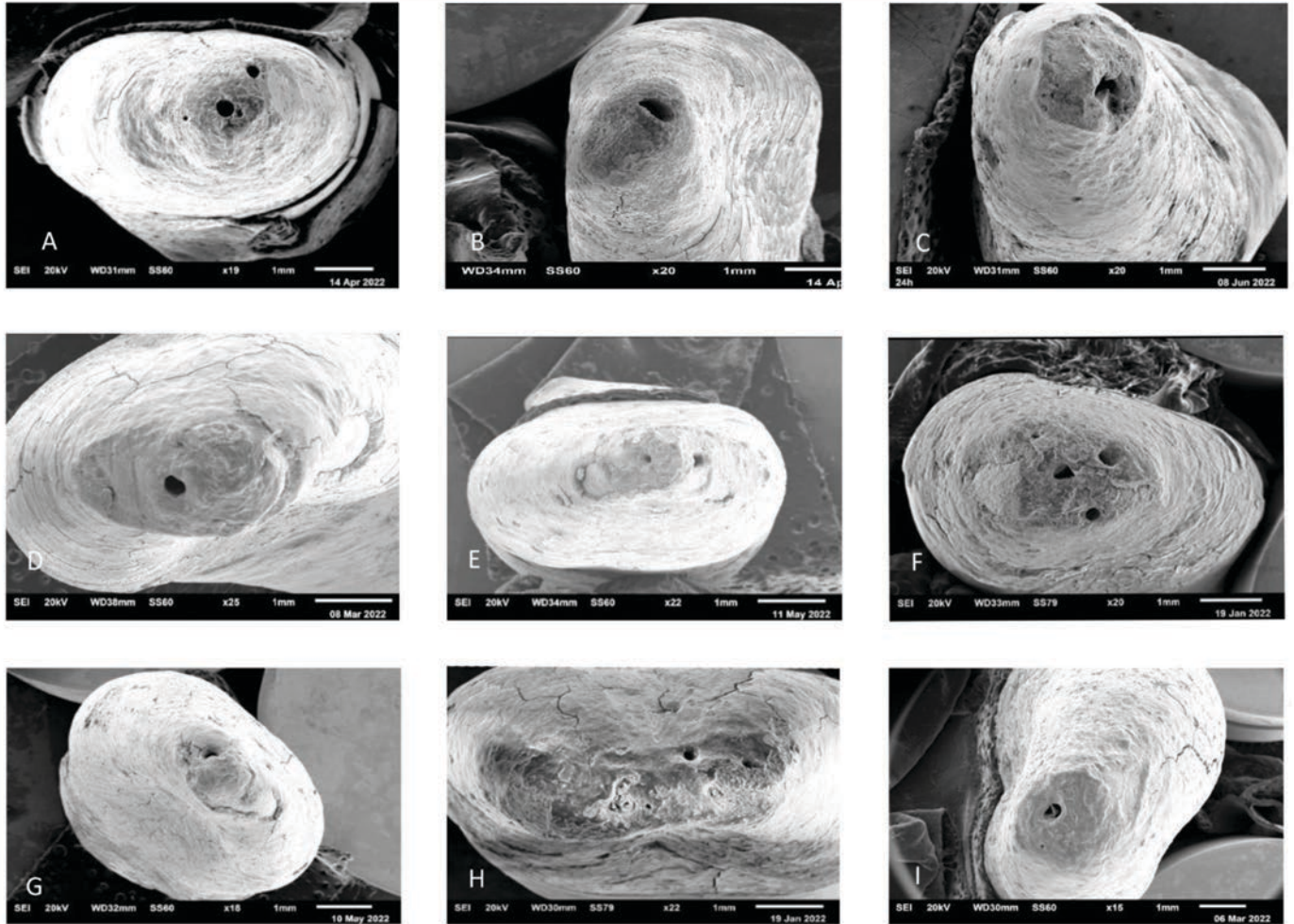


**FIGURE 5.** Shapes and topography of the anatomical foramen with a Scanning Electron Microscopy (SEM)



A. Sample 4.4 - Round apical foramen; B. Sample 3.3 - Oval apical foramen; C. Sample 1.2 - Crack like shape of apical foramen; D. Sample 4.2 - One anatomical foramen; E. Sample 3.1 - two anatomical foramen; F. Sample 3.4 - >2 anatomical foramen; G, H, and I. Sample 4.3, sample 4.1, and sample 1,3 - deviation.